



TODAY

Official News Publication for Loma Linda University Health

March/April 2017

Volume 30, No. 2

Foundation for hospital construction project starts with 'Big Pour'

Loma Linda University Health's new hospital facilities will meet California's stringent earthquake safety standards by 2020.

A significant milestone has been reached in Loma Linda University Health's effort to build new health care facilities by 2020. The foundation slab for the new structure began to take shape on March 25, as 85 concrete trucks delivered more than 5,400 cubic yards of concrete to the building site.

Trucks arrived at the rate of one per minute beginning at 10 p.m., ultimately delivering 540 loads in 10-1/2 hours. More than 100 workers directed the concrete into place. The project completed one-third of the foundation for the new hospital towers. Work took place on Saturday night to minimize impact on local traffic and the current hospital's front entrance. The second phase of the foundation pour will take place in April.

On site to witness the milestone was Eric Schilt, assistant vice president of construction for Loma Linda University Medical Center.

"Overall, the pour was very successful," Schilt said. "There is a tremendous amount of coordination that goes into a pour of this size, and the project team did an excellent job planning and executing it."

"Also of critical significance was the fact that there were no unplanned disruptions to hospital operations. On behalf of our team, I say thank you to our staff, patients and visitors for putting up with our noise!" Schilt said.

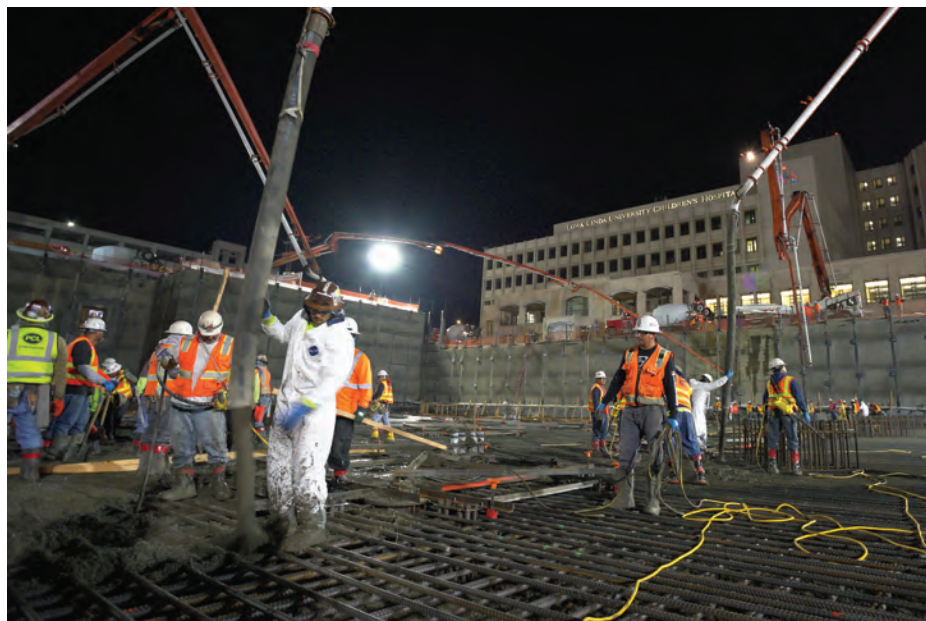
Schilt and numerous others from Loma Linda University Health and JTec Healthcare Construction Management have planned for years to reach this moment.

"A pour such as this is one is a rare opportunity to see significant progress in a single long shift," Schilt said. "With a project this big and this long it can be difficult to see measurable progress on a daily basis. The pour was fun to watch."

Construction progress can be followed on three webcams found online at <http://lluhs2020.org/live-construction-feed>. Additionally, interested individuals can visit the second floor corridor between the Medical Center and Children's Hospital for a good vantage point through the large windows.

Those doing so may just find Medical Center CEO Kerry Heinrich taking in the view as well.

"Look carefully at the glass," he recently said. "You'll see my nose print



there because I try to go up there as often as I can. I love watching the progress of our campus transformation and our new hospital towers.

"They will allow us to meet the needs of our growing community for many decades to come, offering a state-of-the-art facility for us to practice our special brand of whole person care," Heinrich said.

Loma Linda University Health launched this hospital construction effort in response to stringent California state regulations mandating that all

hospitals in the state meet new seismic safety standards by 2020, or be shut down. As a Level 1 Trauma Center, Loma Linda University Health provides care to a large, underserved population in the Inland Empire region. The organization's two main hospitals (Loma Linda University Medical Center and Loma Linda University Children's Hospital) also provide training to thousands of students and residents each year.

Support for the hospital construction effort is a significant component of Vision 2020: The Campaign for a Whole

The first of three foundation pours for the new hospital structure took place on March 25. More than 500 truckloads of concrete were delivered to the site. Two more pours will complete the foundation.

Tomorrow, a \$360 million comprehensive philanthropic initiative, the largest in the history of Loma Linda University Health. Vision 2020 also represents the largest investment in health care and education in the Inland Empire.

The Vision 2020 campaign supports priorities in:

- Clinical Care, allowing Loma Linda University Health to continue providing excellent health care in a new adult hospital and expanded children's hospital.
- Education, providing funding for increased scholarship endowments, faculty development, and new educational approaches.
- Research, constructing a research center where Loma Linda University Health's best scientists can collaborate across disciplines.
- Wholeness, expanding Loma Linda University Health's historic emphasis on living a healthy lifestyle and sharing that knowledge locally and internationally.

Many Strengths. One Mission.

LOMA LINDA UNIVERSITY HEALTH : LOMA LINDA UNIVERSITY | SCHOOL OF ALLIED HEALTH PROFESSIONS | SCHOOL OF BEHAVIORAL HEALTH | SCHOOL OF DENTISTRY | SCHOOL OF MEDICINE | SCHOOL OF NURSING | SCHOOL OF PHARMACY | SCHOOL OF PUBLIC HEALTH | SCHOOL OF RELIGION | LOMA LINDA UNIVERSITY MEDICAL CENTER | UNIVERSITY HOSPITAL/ADULT SERVICES | LOMA LINDA UNIVERSITY CHILDREN'S HOSPITAL | LOMA LINDA UNIVERSITY MEDICAL CENTER EAST CAMPUS | LOMA LINDA UNIVERSITY BEHAVIORAL MEDICINE CENTER | LOMA LINDA UNIVERSITY SURGICAL HOSPITAL | LOMA LINDA UNIVERSITY MEDICAL CENTER MURRIETA | HIGHLAND SPRINGS MEDICAL PLAZA

Homecoming kicks off with 'healthy people' event in healthiest community

Hundreds of people gathered at Loma Linda University Health's Drayson Center for Healthy People in Healthy Communities, Thursday, March 2.

By Briana Pastorino

One of Loma Linda University Health's signature events, Healthy People in Healthy Communities (HPHC), kicked off the first full day of the annual alumni Homecoming celebration. However, this year's Homecoming was unlike those in years past — it is One Loma Linda Homecoming, encompassing all eight schools simultaneously.

"We are celebrating the legacy of Loma Linda University Health and the alumni who live this legacy every day," said President Richard H. Hart, MD, DrPH.

Homecoming's opening event celebrated the city of Loma Linda's recognition as a Blue Zone®, one of five geographic areas in the world where residents have greater longevity. The only Blue Zone in the United States, Loma Linda was declared one in Dan Buettner's November 2005 cover story for *National Geographic*.

Hundreds came out to experience the first International Symposium on Blue Zone Science & Health where experts from each of the five Blue Zones



Dan Buettner, curator of the Blue Zones and a featured speaker for the Healthy People Conference, shared what people in the world are doing to live longer, healthier lives

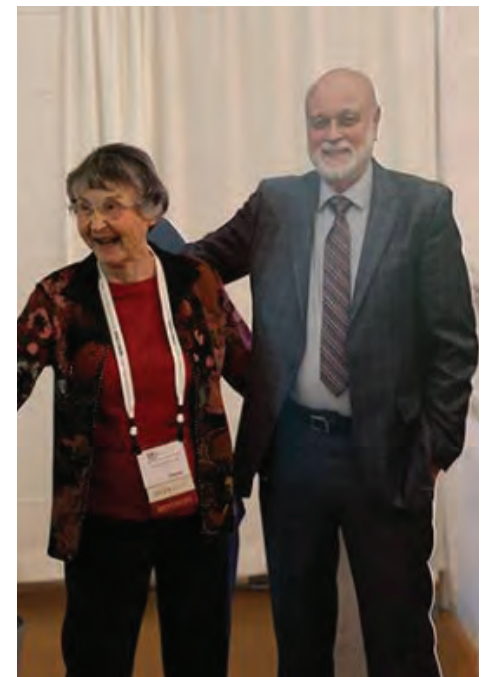
—Sardinia, Italy; Okinawa, Japan; the Nicoya Peninsula in Costa Rica; Ikaria, Greece; and Loma Linda —gave updates on the most recent research as it relates to longevity in their respective regions.

Their findings: wellness and longevity is affected by diet and nutrition, physical activity, and one's social and spiritual well being. In other words, a term Loma Linda University Health is quite familiar with: wholeness.

Michael Poulain, PhD, from Sardinia, the first validated longevity Blue Zone, emphasized the United States has opportunities to change the environment. "There is a lot of soda in the U.S.," he said. "But if we replaced all the soda fountains with water fountains, what a difference it could make."

HPHC is the premier conference on lifestyle medicine and the built environment. The conference underlines Loma Linda University Health's legacy of promoting health, longevity and wholeness while creating a platform for exploring the role of Blue Zone areas as a paradigm for population health.

Welcoming Alumni Home



The "One Homecoming" kickoff party brought together alumni, students and employees, past and present, the evening of March 2 to celebrate Loma Linda University Health's first organization-wide reunion weekend.

The kickoff party, held in an event pavilion set up in the Drayson Center field, included carnival games, food vendors, a chance to pose with a cardboard cutout of President Richard Hart (above right), displays by schools (right), and a concert by the Wedgwood Trio (above).



one homecoming 2017

Adventist Church's Health Ministries director challenges alumni's ideas of service

By Nancy Yuen

The Seventh-day Adventist world church's top health leader challenged a gathering of Loma Linda University Health (LLUH) faculty and alumni to think differently about how they view mission service and their own health.

Peter Landless, MD, health

ministries director at the denomination's world headquarters, said that while Loma Linda University alumni may think mission service happens in countries outside of the United States in the Church's hundreds of hospitals, dispensaries and clinics, it also occurs every day as patients visit their offices.

Landless, a cardiologist who made his remarks during a LLUH alumni

mission breakfast on campus March 3, encouraged each participant to schedule time to promote wholeness in their own lives, apart from work and service.

"When Jesus healed people, he addressed their mind, body and spirit," he told the audience. He added, "The Seventh-day Adventist health message has been given to us to fit us for service because our work is not yet done."

Landless traced the history of health care when people living with disease were viewed as having failed to follow natural health laws (works) to the belief that we are given health so that we can take care of ourselves to serve (grace).

As it has pursued these principles, Loma Linda University Health has become a leader in research and whole person care. The impact on health and longevity was shared globally in Nov. 2006, when the city of Loma Linda was declared a Blue Zone® in a National Geographic cover story written by Dan Buettner. Blue Zones are areas of the world where people live much longer than the surrounding population.

The event grew from a Mission Breakfast held each year, sponsored by the National Association of Seventh-day Adventist Dentists (NASDAD) and the School of Dentistry. Attendees were primarily faculty and alumni who have served as overseas missionaries.

Doyle Nick, DDS, associate professor, LLU School of Dentistry, hosted the event. Nick, who once worked as a dentist in Asia, is also associate director for dental affairs for the Adventist Church's Health Ministries department.

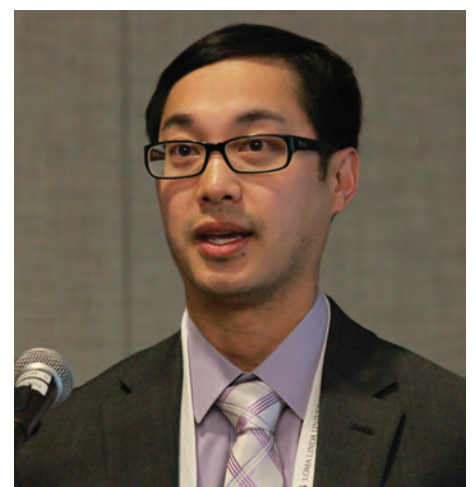
The breakfast, held during LLUH Homecoming, was an opportunity for alumni and faculty from LLU's eight schools who have provided health care overseas to gather and network.



Peter Landless, MD, director, department of Health Ministries at the General Conference of Seventh-day Adventists, addressed alumni and faculty from Loma Linda University Health who have provided health care overseas.

Research highlights featured during Homecoming weekend

The depth of research quality occurring in Loma Linda University Health's eight schools took center stage at a four-day research symposium, held as part of the 2017 One Homecoming weekend. Researchers from the schools, centers and institutes filled the fourth floor of the Centennial Complex, with poster presentations and lectures taking place throughout the One Homecoming celebration.



Loma Linda University Health's research efforts took over the fourth floor of Centennial Complex during One Homecoming. Along with displays and posters (left), there were lectures throughout the weekend. Presentations included updates by Heather Javaherian-Dysinger, OTD, OTR/L (top), Kimberly Payne, PhD (above left), and Monty Soprano, DDS.

Homecoming vespers program spotlights history, future of outreach

Leaders present stories of continued expansion, service through faith

By Ansel Oliver

Loma Linda University Health leaders showcased the institution's establishment and longtime expansion of its mission at the Friday evening vespers service during the alumni One Homecoming weekend.

Presenters spotlighted LLUH's collaboration with the nearby San Manuel Band of Mission Indians that stemmed from early outreach when sanitarium doctors and students would ride horses across the valley to help deliver babies of tribal women, a practice that first began in 1911. Also, Pat Morris, former mayor of the nearby City of San Bernardino, highlighted how the university had offered pro bono services for troubled and abused youth over the years.

Throughout the March 3 service, executives underscored their commitment to further expansion of services in Southern California's San Bernardino Valley, all building upon the organization's Seventh-day Adventist founding in 1905 to continue the teaching and healing ministry of Jesus Christ.

"This is San Bernardino and our history of our university being connected with our community," LLUH President Richard Hart, MD, DrPH, said to the audience at Loma Linda University Church.

One presenter related the story of how Loma Linda's founding was controversial among Adventist Church officials. Church cofounder Ellen G. White visited the area and determined "this is the very place" to develop medical missionaries for local and international service. The episode was presented by Loma Linda University Church Senior Pastor Randy Roberts impersonating

John Burden, who is credited with having followed White's prompting to help found what was then known as the Loma Linda Sanitarium.

The early debate over founding the sanitarium surrounded the cost of founding such an institution, Roberts said while portraying Burden. But Burden and other Adventists moved forward in securing land and establishing the sanitarium in faith, with needed funding often coming right before financing deadlines.

"We have nothing to fear for the future except we should forget God's leading in our past," Roberts said quoting White.

The audience was also updated with stories of LLUH's new San Bernardino Campus facility, which houses Social Action Corps Health System (SACHS) and LLUH's San Manuel Gateway College.

One student at the college, Edilma, said she hopes to give others what LLUH once gave her — she was a patient at LLUH's Behavioral Medicine Center when she was younger.

"God gave [me] those physicians and nurses [who] gave me another chance at living," she said, breaking with emotion. "My goal is to be a psych nurse so I can give back what Loma Linda gave back to me, which is another chance at life."

San Manuel Gateway College Executive Director Arwyn Wild said the college is appealing for mentors and coaches for students, many of whom need guidance in applying and studying for college courses.

The spiritual service was part of the One Homecoming weekend in which alumni from all LLUH's eight schools are meeting simultaneously.

"There's nothing like having old friends get together," said Hart.



Randy Roberts, vice president for spiritual life and mission, portrays John Burden, one of Loma Linda's founders.



Richard Hart, Loma Linda University president, interviews Tribal Secretary, Ken Ramirez, from the San Manuel Band of Mission Indians, about the care Loma Linda University Health provided to tribal members over the decades.



San Manuel Gateway College student Edilma has a goal to become a psych nurse in order to help other young people in the way Loma Linda University Health helped her.



Pat Morris, (right) former San Bernardino mayor, thanks President Richard Hart for the many ways Loma Linda has served the city.

Alumni Come Together to Remember

'One Homecoming' worship service challenges alumni to reconnect with mission

By Larry Becker

The power of memory was the theme of Loma Linda Health's "One Homecoming" weekend's worship service, held at the Drayson Center on March 4.

"One word will keep coming up in conversation during this weekend—'remember,'" said Randy Roberts, vice president for spiritual life and mission, during his sermon. "Homecoming is a chance for each of us to celebrate, to dream, but especially to remember."

"Remembering isn't just romantic. It has to do with identity, with understanding who we are, why we are here," Roberts continued. "As we remember, we are constituted a new people, with a new mission, focus and purpose. It's not just romantic, it's about core identity."

From the first moments of the morning's service, alumni had opportunities to remember many of the strengths of Loma Linda University Health possesses. A parade of more than 50 flags of countries around the world called to memory the university's diverse student body and represented the many countries of the world where Loma Linda University Health alumni serve.

"We want to express our thanks to each one of you alumni," said Ronald Carter, PhD, executive vice president for university affairs. "You have taken the education you received here, and used it to bring hope and healing to this world. You are our reputation. You are Loma Linda."

Alumni then were reminded of Loma Linda University's core commitment to serve those in need around the world.

"Mission service changed my life," said Elaine Bersaba, a student in the School of Dentistry, speaking on behalf of the Students for International Mission Service program. "I learned that God sends you to a specific time and place, so you can best know him." Bersaba went on to tell how, by performing a tooth extraction, she was able to help a woman who had been in pain for more than six months.

This year more than 60 students are participating in Loma Linda's Deferred Mission Appointment and Global Service Award programs. These two programs allow students to commit to overseas service after graduation, with the programs making payments on the students' debt each month they serve.

"The best time for students to be involved in world service is right when they graduate," said Richard Hart, MD, DrPH, Loma Linda University Health president. "It's before they have to many ties and obligations holding them back."

The men and women who have served Loma Linda University Health were also remembered. Two former presidents, Norman Wood, and B. Lynn Beherns, and Anita Olsen, widow of former president V. Norskov Olsen, were recognized. More than 50 former administrators also were in attendance.

The morning's music was another powerful reminder of Loma Linda University Health's diverse student body. Music groups performing included the School of Public Health Choir, the Cheek Brothers Quintet, the Black Alumni of Loma Linda Chorale, and the School of Allied Health Signing Choir.

"Remembering roots us to our identity," Roberts said. "We come together to remember not just the joy and the laughter, as important as those things are. We come together for a much deeper reason, to connect with our identity and connect with our mission."



one homecoming 2017

Loma Linda alumni share their talents

The talent was incredible. The audience, massively entertained. The Drayson Center venue, stunning. From bluegrass acts to world-class violinists, the spotlight was on Loma Linda University Health's deep roots of musical talent throughout its eight professional schools, during the "Loma Linda's Got Talent" talent show, held March 4.



Prayer Walk offers time for reflection

Alumni, students and faculty found fellowship through praying together.

By James Ponder

Loma Linda University Health's first annual One Homecoming Prayer Walk, which took place on Saturday, March 4, featured a creative setup to encourage participants to pray for various facets of the organization's work and mission.

Attendees prayed for everything from personal wholeness, gratitude and forgiveness to students, faculty, alumni and the organization's global impact.

Guests were greeted at 7 a.m. in front of the Mission Globe by volunteers of the School of Religion, who handed out a brochure outlining the purpose of the event and drawing attention to six prayer stations — picnic tables covered with black tablecloths. Each station offered an activity focused on its unique purpose.

The first station focused on thankfulness and praise. With scriptural encouragement from Psalm 106:1, guests were invited to give thanks to God for His goodness, and to write a message of thankfulness on a poster at the table.

The second station related to the theme of forgiveness and intercession and featured pens and slips of paper for participants to write the names of people they wanted to forgive.

The third station contained small globes and featured the theme of community. The brochure instructed participants to think of themselves in terms of the local community that surrounds Loma Linda University Health as well as its worldwide impact.

The fourth station featured groups of eight black stones on white sheets of paper. The stones represent the eight schools of Loma Linda University Health. Participants were invited to reflect on the people impacted by each school as they held the stones in their hands, asking God to guide and bless.

The fifth station drew attention to the thousands of alumni and students, and instructed guests to pray for



Alumni, students and faculty found fellowship through prayer during the "One Homecoming" weekend at the early morning prayer walk.

all those who have attended school here in the past as well as current student, that they would find and follow God's will.

The sixth and final station asked participants to pray for each individual working at Loma Linda University Health. As guests finished making their rounds, there was one more station to visit — breakfast.

As the event came to an end, one guest shared that he had been impressed of his need to forgive a family member for quite some time. "I'm glad I was here today," he said. A woman standing nearby said she enjoyed the opportunity to meet with other believers at the start of a busy day to reflect on the spiritual emphasis she always enjoyed at her alma mater.



One Homecoming 5K racers honored the memories of Dr. Samuel Soret and Matthew Schrader.

Homecoming 5K honors memory of Soret, Schrader

By Nancy Yuen

Energy was high as participants in the 2017 Homecoming 5K Run/Walk began the race.

Sarah Schrader spoke to the crowd gathered at the Drayson Center before the start of the Loma Linda University Health Homecoming 5K Fun Run/Walk, saying her family will forever be connected with the family of Dr. Samuel Soret, immediate past chair of the School of Public Health's Environmental and Occupational Health department. Soret passed away from a heart attack in August 2016, while on a trip to Spain.

The Homecoming 5K was held in memory of both Soret and Schrader's husband, Matthew Schrader, a 2001 graduate from the School of Allied Health Professions, who died in a motorcycle accident in 2014.

While Craig Jackson, MSW, JD, dean, School of Allied Health Professions, joined the School after Schrader had graduated, he mentioned the many people who had shared their memories of the 2001 graduate with him. Schrader is remembered as a caring individual who didn't see his work as a physical therapy assistant as a job — he enjoyed the patients he worked with and took great joy in getting to know them personally.

There was laughter as the family remembered how Matthew's daughters had taught him to appreciate sparkle and glitter; his daughter liked to give her daddy pink pedicures which, unbeknown to the patients he worked with as a physical therapy assistant, were hidden by his work shoes.

In his memory, his family has started a scholarship, the Matthew Lynn Schrader Memorial Fund, for physical therapy assistant students at Loma Linda University.

Helen Hopp Marshak, PhD, dean, School of Public Health, recalled Soret as a friend of more than 20 years. He faithfully served Loma Linda University for 21 years, most recently as associate dean for research and executive director of the School's center for community resilience. He was also a former chair of the school's environmental and occupational health department.

To honor Soret's legacy and the students he was passionate about, a fund in his memory will support students studying environmental and occupational health or health geoinformatics at Loma Linda University.

Black student group honors founder for promoting minority student opportunity

Reese also established initiative offering high school students on-campus experiences

by Ansel Oliver

The Black Health Professional Student Association (BHPSA) honored Loma Linda University Health executive Leroy Reese, MD, during Homecoming weekend for his longtime service of promoting opportunities for minorities in health-care education.

Reese went on to coordinate a group of volunteers to establish the Minority Introduction To Health Sciences (MITHS) program, which offers Black high school students a chance to spend three weeks on the Loma Linda University Health campus learning about opportunities at each of the eight schools.

Today, more than 300 students have participated in the program, which he founded in 1999. Nearly 99 percent of participants have graduated with an undergraduate degree, 72 percent have completed or are pursuing master's level training, and 44 percent have completed or are enrolled in a doctoral program.

Former participants periodically contact him when visiting the area, and several have mentioned they owe their success to him and the staff who operate the MITHS program.

"You can't come up with any amount of money to replace that kind of reward," Reese told a gathering of Black alumni at Homecoming on March 4.

Reese is the associate dean of the LLUH School of Medicine's Los Angeles campus and chairman

of the OB/GYN Department at White Memorial Medical Center in Los Angeles.

He urged attendees to continue contributing to the MITHS program as well as the W. Augustus Cheatham scholarship fund, which supports Black students.

"Just because we're out making money now and everybody is all dressed up and successful doesn't mean we don't have a responsibility to give back," he said.

Reese's activism as a LLU student in the early 1970s led to the school implementing numerous proposals for minority inclusion. This included a proposal that led to the hiring of Dr. Gaines R. Partridge, who was brought on board to recruit and advocate for minority students and retired as the dean of student affairs. Reese currently serves as treasurer of Black Alumni of Loma Linda.

"It is upon your shoulders, your valuable service, that the Black Health Professional Student Association of Loma Linda University has its heritage and identity," said current BHPSA president Jim Ervil. "We honor you for your exemplary and purposeful contributions for minority students of Loma Linda for over 48 years."

Reese also told the audience he supports Loma Linda University President Richard Hart's Diversity Council. The institution in recent years has phased out the position of vice president for diversity, and Hart has placed the responsibility for diversity inclusion upon all top executives.

"He really wants us to be successful at this institution and outside the institution," Reese said. "Let us work together going forward."



Warren Boling, MD, spoke to the Congressional Neuroscience Caucus in March.

Neurosurgery professor briefs congressional caucus

By Heather Reifsnnyder

When the U.S. Congressional Neuroscience Caucus hosted the sixth annual Brain Mapping Day briefing March 8 in Washington, D.C., a Loma Linda University professor was one of seven experts from across the nation who spoke.

Warren Boling Jr., MD, chair of neurosurgery at Loma Linda University Health, illuminated the topic of "Intraoperative Brain Mapping for Brain Tumor and Epilepsy."

Much of what he presented he drew from Loma Linda University's data about the rapidly evolving use of functional MRI and diffusion tensor imaging to make brain surgery safer and more effective.

"We had a good reception from our legislative members who attended and then had excellent follow up conversations with staff members for California Senator Kamala Harris," Boling said.

"We also had a wonderful meeting with Congressman Pete Aguilar, talking about Loma Linda University Health and the great things we're doing for the Inland Empire."

The other speakers at the briefing also presented "groundbreaking and forward-thinking advances in the neurosciences," Boling said.

He is president-elect for the Society for Brain Mapping and Therapeutics, which organized the meeting. His one-year term will begin in April, marking the first time someone from Loma Linda University has held such a high position with the society.

Boling summarized, "It was important for our legislators to hear about the obstacles and difficulties that we're having in improving patient care as well as the advances we're making and the exciting new things that are coming to improve the lives of our patients with neurological diseases.

"In the future we can tackle more complicated problems using these advanced mapping and imaging techniques."



Members of the Black Health Professional Student Association honored Leroy Reese, MD, for his efforts to offer Black high school students a program of on campus learning at Loma Linda University Health.

one homecoming 2017

Loma Linda University Health recognized in top 25 places to work in health care in the U.S.

By Briana Pastorino

There are nearly 6,000 hospitals in the United States, but not everyone wants to work in health care. There are, however, some health systems that fare better than the rest, and Loma Linda University Health is one of them.

Loma Linda University Health has been nationally ranked in the list of best places to work in the health care industry according to Indeed.com, an employment related search engine for job listings.

Based on reviews by employees, Loma Linda University Health ranked 25th among all hospitals and health systems in the United States.

“Our employees are what make Loma Linda University Health the successful organization it is today,” said Richard Hart, MD, DrPH, Loma Linda University Health president. “It is because of them that we are committed to creating a work environment that is truly special, and being recognized by Indeed is a testament to that commitment.”

Loma Linda University Health employs nearly 16,000 people across its six hospitals and eight schools, and it receives more than 85,000 job applications annually.

“Loma Linda University Health has become known as a leader in providing quality, whole person care,” said Mark Hubbard, senior vice president, human resource management at Loma Linda University Health. “We are also focused on providing a work atmosphere that positively affects the whole person.”

In addition to attractive medical and dental benefits, retirement plan, paid leave and sick leave, Loma Linda University Health also provides staff with a free gym membership and a variety of services



A group of Loma Linda University Health employees enjoyed a moment out of their day to take a group “selfie.”

through the Living Whole wellness program. This program fosters an environment of health and wellness by providing free services and resources to aid employees and their families in the journey of health and wellness. This includes health screening and programs for weight loss, smoking cessation nutrition support, exercise and personal health coaching. Free counseling services are also available through the employee assistance program.

New benefit programs that were introduced in 2016 include identity theft protection and credit monitoring, access to online financial wellness

planning and an increase in the matching contribution to employees’ retirement accounts.

According to reviews on Indeed.com, employees had the following to say about Loma Linda University Health:

- “Loma Linda University Health is very productive and inspiring. The culture here is very welcoming as well.” – phlebotomist.

- “All staff, patients and visitors experience a positive and healing environment that corresponds to the values represented by Loma Linda University Health.” – patient care assistant therapist.

11 lives saved through organ transplant in record five days at Loma Linda

By Heather Reifsnnyder

Ranging from 13 to 70 years old, eleven individuals are free of the anxious wait for a new organ to save their lives. Thanks to the selfless act of families and individuals choosing to donate organs, a record-breaking streak of transplants for Loma Linda University Transplantation Institute was made possible.

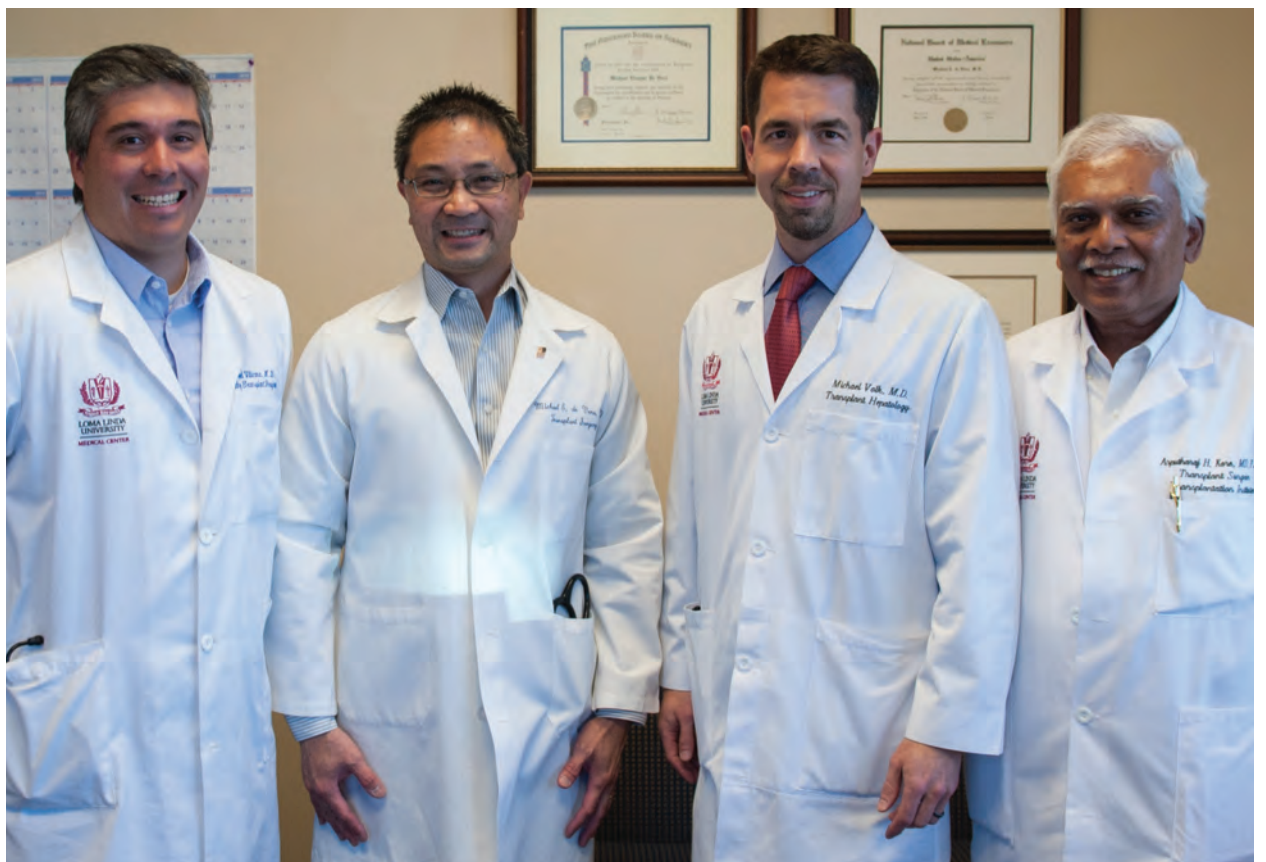
When organs become available, it’s go time. Surgeons drop what they are doing and rush to the hospital to perform these life-saving transplants. For each organ that is recovered, surgical teams must be assembled, operating rooms cleared, and no one from the transplant teams rests until the lengthy procedures are completed.

Phones began to ring on February 27 with organ offers and peaked on March 1, with five patients and six organs transplanted within 24 hours. The surgical streak concluded March 3 with two organs transplanted. A 50-year-old received a donated liver and kidney, and ten individuals, ranging in ages from 13 to 70, received the gift of life through donated kidneys.

Ultimately, 11 patients received transplants and a new lease on life within five days.

These transplant surgeries set two new records for the LLU Transplantation Institute: most solid organs transplanted within five days and most organs transplanted within a 24-hour period.

“While the availability of organs is unpredictable, we are prepared to meet this high demand,” says Michael de Vera, MD, Transplantation Institute director. “We’re so thankful to the physicians and staff at the Transplantation Institute as well as the Medical Center, including the staff of the operating rooms, units 8100, 4700 and 4100, and other services. Transplant is a teamwork specialty, and



From left Drs. Rafael Villicana, Michael de Vera, Michael Volk and Arputharaj Kore are some of the members of the transplant team who helped make the remarkable five days a success for 11 patients.

these patients can’t get served without everyone’s help and commitment.”

The surgeons performing the transplants were de Vera, Arputharaj Kore, MD, Philip Wai, MD, and Pedro Baron, MD.

The LLU Transplantation Institute performs

pancreas, liver, kidney, liver/kidney, and heart transplants. To learn more about the Transplantation Institute, visit <http://medical-center.lomalindahealth.org/our-services/transplantation>.

—additional reporting by Melissa Robinson.

Charles Weniger Society honors Loma Linda University figures

Sigve Tonstad and Brian Bull recognized by the Weniger Society for Excellence

By Ansel Oliver

Two Loma Linda University Health figures were honored by the Charles E. Weniger Society in February for their contributions to the Seventh-day Adventist Church.

Brian Bull, MD, an inventor and former dean of the School of Medicine, and Sigve Tonstad, MD, PhD, MA, a physician and author who maintains an appointment in the School of Religion, were each presented a Weniger Award in a ceremony at the society's annual meeting on Saturday, Feb. 18, at Loma Linda University Church.

The Weniger Award — named in honor of the late seminary dean and English professor Charles E. Weniger — has been presented to more than 160 prominent Adventists since the society was founded in 1974.

Bull has written widely on the discord between science and religion, and served as a co-editor of papers from the Geoscience Research Institute conferences. His book "God, Land and the Great Flood," a companion to his 2011 "God, Sky and Land," is soon set for release.

While a resident at the National Institutes of Health, Bull created an algorithm that is now implemented in the software of every blood analyzer manufactured. He is also credited for increased monitoring of how cardiopulmonary bypass patents metabolize heparin to reduce post-operative bleeding. He also served for 10 years as editor of the international hematology journal *Blood Cells*.

At Loma Linda University School Medicine, Bull served as chair of the Pathology Department and program director for the pathology residency for more than 40 years. In addition, he served as dean of the School of Medicine from 1994 to 2003.

In his acceptance address, Bull showed his appreciation to the society and honored his late parents, who he said had inspired him and many other successful people.

"Thank you to the Weniger Society, and thank you Mom and Dad — you would [have been] pleased today to see just how far your influence has extended," he said.

Tonstad, a physician and theologian originally from Norway, maintains an appointment in the Loma Linda University School of Religion and practices medicine in Oslo. He has written widely on world religions, the problem of suffering, and the literature of apostles John and Paul. His books include "The Scandals of the Bible," "God of Sense and Traditions of Non-Sense," and "The Lost Meaning of the Seventh Day," which contains poetry. He is currently working on the



Drs. Sigve Tonstad, left, and Brian Bull were honored by the Weniger Society for Excellence, Feb. 18 at Loma Linda University Church.

Revelation volume in the Paideia New Testament Commentary Series.

"I am deeply honored to be a Weniger awardee," Tonstad said. "I take it as a generous affirmation of my work, and I also see it as a recognition of the continued and inexhaustible relevance of biblical literature."

The program also included award presentations for Alvin L. Kwiram, a physical chemist and researcher, and Verla Rae Kwiram, a businesswoman and gender equality activist.

"We are grateful for all the contributions our awardees have made to society and to the Adventist Church, and it is our privilege to honor them with this well-deserved recognition," said Bernard Taylor, the Weniger Society's president.

Ashley Furniture provides beds to six patient families

By Briana Pastorino

Six Loma Linda University Health families are sleeping a little better thanks to Ashley Furniture HomeStore. As part of their Hope to Dream program, 11 beds were donated to six patients and their siblings.

One of those patients is Sophia Rubio, 11, of Riverside, who has been a patient at Loma Linda University Children's Hospital since she was diagnosed with systemic Scleroderma, a rare and progressively debilitating disease, in 2009, when she was just 4 years old.

Rubio and her two siblings each received a new twin mattress, bed frame, bedding and pillow from Ashley Furniture.

In addition to the new beds, the six families were treated with a surprise trip to the Disneyland Resort in Anaheim, which included a meet and greet with Minnie Mouse and Mickey Mouse. Each family received park hopper tickets and met the Ashley Furniture Hope to Dream team.

More than 50 beds have been donated to Loma Linda University Health families through the Hope to Dream program since April 2016.

"It is the hope of Ashley Furniture that

every child around the world has a clean, unused mattress set to call their own," said Kurt Haines, senior vice president of Ashley Furniture HomeStore. "We appreciate the efforts of Loma Linda University Children's Hospital to assist us in our efforts to make that possible. Because of them, 11 kids now have a bed to call their own."

A portion of every Ashley HomeStore mattress set purchase goes to Hope to Dream, a program designed to provide a free twin mattress, bed frame, bedding and pillow to underprivileged children ages 3-16.



Sophia Rubio, left, sits with her mom, Claudia, on her new bed that was given to her by Ashley Furniture HomeStore on February 10. Her two siblings sit with their dad on one of the other new beds the family received.

Community members honored at annual Children’s Hospital Foundation Gala



Scott Perryman (left), vice president/administrator, LLUCH, presents Alane Allbee, RN, with the Hometown Hero Award.

Individuals and groups were recognized for their dedication and service to children throughout the Inland Empire

By Briana Pastorino

The 24th annual Foundation Storybook Gala was an enchanting success, raising over \$1.2 million for Loma Linda University Children’s Hospital (LLUCH). However, the event was more than about raising money—it was also an opportunity to recognize key organizations and individuals who are essential to the hospital’s success.

Four awards were presented during this year’s event, which took place at the Riverside Convention Center on Feb. 16.

Alane Allbee, RN, was presented with the Hometown Hero Award, which recognizes the contributions of individuals who share a passion for children and help enrich the quality of life in the community.

A charge nurse on the hematology/oncology unit at LLUCH, Allbee goes beyond the call of duty. She created the Spirit of Christmas project 25 years ago that she and other nurses work on all year to provide personalized gifts for patient families in need in the Inland Empire.

“I went in to nursing to make a difference in the lives of children,” Allbee said. “I want every patient to know that we are a second home for them, and we give our best.”

The Outstanding Clinician Award was presented to Stephen Ashwal, MD, a pediatric neurologist at LLUCH. The award recognizes individuals who have demonstrated a lifelong dedication and distinguished service provided to children and who, through their professional career and advocacy, have demonstrated the desire and motivation to improve the lives of children in the Inland Empire.

Now the chief of pediatric neurology, Ashwal joined LLUCH more than 40 years ago and has influenced more than a generation of pediatricians internationally through his research and care of children.

Frank and Mary Ann Xavier were honored with the Discover Lifetime Achievement Award, which recognizes outstanding dedication and lifetime distinguished service to children through their personal and professional lives.

“Few people have identified with our mission and culture like the Xaviers,” said Richard H. Hart, MD, DrPH, president of Loma Linda University Health. “Their participation in many events and commitment to our future is exemplary, and I am delighted to recognize them in this way.”

The fourth and final award presented during the gala was the Shirley N. Pettis Award, and it was given to Farmer Boys. The award recognizes those who, through volunteering and community service, have demonstrated the desire and motivation to improve the lives of the Inland Empire’s children.

Farmer Boys has raised more \$655,000 for LLUCH during the past 16 years benefiting nearly every unit at the hospital. Restaurant founder and CEO, Demetris Havadjias, along with President and COO, Karen Eadon, accepted the award on behalf of Farmer Boys.

“It makes our job so much more meaningful when we’re doing something that’s making a difference in the lives of people,” Eadon said of their most recent fundraiser for the hospital, “and for us that means so much.”



Dr. Richard Chinnock, left, presents Dr. Stephen Ashwal with the 2017 Outstanding Clinician Award.



Dr. Richard Hart, Loma Linda University Health president, presents Mary Ann and Frank Xavier with the Discover Lifetime Achievement Award.



Karon Eadon holds the award she accepted on behalf of the Farmer Boys restaurants. Company founder Demetris Havadjias is on the right.

Reportable Crimes

The Crime Awareness and Campus Security Act of 1990 requires colleges and universities across the United States to publish interim reports on campus crime activities. Listed below are the crimes reported for Loma Linda University Health for the month of March 2017:

Type of Crime	Number of Crimes	Place of Crime
Motor Vehicle Theft	2	Lot J; LL Academy
Burglary Motor Vehicle	4	Lot DC; (2) Lot P3; Campus Hill Church
Disturbance	1	Access Center
Larceny – Theft	2	MC; LLU SB Camp
Trespass	1	R & L Thrift
Narcotics	3	MC; Caroline Clinics; BMC
Criminal Attempt	1	LLU Health Support Service
Fire	1	Cancer Research Inst.

You can assist the Loma Linda University Health department of security in maintaining a safe and secure environment by notifying security immediately at extension 9-1-1 if you see or know about a crime taking place.

How a picturesque grain mill led Brian Bull, MD, to an important health discovery

By James Ponder

A serendipitous conversation led Brian Bull, MD, to an important discovery about the human gastrointestinal system.

“Maureen and I ran across a functioning grain mill on a vacation to the Lake District of England in the late 1990s,” said Bull, who recently retired as chair of professor of pathology and human anatomy at Loma Linda University School of Medicine.

Although the couple intended to stay only 45 minutes touring the picturesque town of Boot with its 700-year-old stone mill, the tour ended up lasting several hours when something the miller said caught Bull’s attention.

“The miller had a very large library,” Bull recalled. “He was not only keeping the large millstones in good running order, he was also a scholar and very knowledgeable about the grain-milling process. One of the things he stressed was that the large millstones in a working mill have to be taken apart every few months for dressing.”

The miller explained that dressing the stones involved removing a varnish-like coating that blurs their sharp right-angle edges.

“The millstones never touch,” Bull said, “but they have grooves cut into the grinding surfaces. As the grooves of one stone go over the grooves of the other, they ‘scissor’ the grain. But when varnish—which is the residue of volatile oils in the grains—builds up between them, that can’t happen.”

The miller said that all grain was stone ground until steel milling technology was introduced in the late 1890s. “By the early 20th century, steel mills had completely taken over,” Bull said.

Although the new technology produced a popular, very white flour, it came at an unforeseen cost.

“The miller explained that steel mills, with their very fine tolerances, could pop the wheat germ out of the grain before milling actually began,” Bull said. “They could also remove all of the wheat bran.”

Because all the volatile, wheat-germ oils that used to coat the millstones were now missing, the result was bran-free flour. Unlike stone ground flour, white flour can be stored at room temperature without going rancid. “This flour is the foundation on which the fast food enterprise is built,” he said.

As a result, a major source of fiber, wheat germ, and wheat-germ oils in the Western diet disappeared almost overnight.

“In the large intestine,” he continued, “there are many species of bacteria that break down bran and other types of fiber. These are the bacteria that make Vitamin B-12, Vitamin K, and a whole lot of other compounds—such as short-chain fatty acids—that act in beneficial ways throughout the body, including the brain. But all of this gets disrupted because of the change in milling.”

Bull said science knows very little about the bacteria in the human digestive tract.

“Most of what gut bacteria do is



Brian Bull, MD, points to a photo of the stone mill in England where he learned an important secret about gastrointestinal health. The painting above his head depicts the stream that powers the mill.

good,” he reported, “but that isn’t true when it comes to their role in processing red meat. Red meat, after the gut bacteria get through with it, turns into a toxin that inhibits the metabolism of spent cholesterol, thereby allowing it to build up in the body.”

Although the toxic potential of red meat was discovered and reported about 18 months ago, Bull said most journalists love hamburgers, so they didn’t cover the story.

“Lack of fiber in the diet—wheat bran used to be a major source—can lead to medical complications such as diverticulosis and diverticulitis,” he observed.

The first term describes a condition in which small, unwanted pockets balloon out from the gut wall. It causes gassiness, bloating, and abdominal swelling. If it progresses far enough, however, it can lead to diverticulitis, a deadly disease

from which 300,000 people suffer each year in the US. Bull says many of those afflicted will die.

When Bull and his wife, who is also a physician, returned to the United States, he set out to develop a breakfast cereal to replenish the missing bran, wheat germ, volatile oils, and fiber that the human digestive tract needs.

Bull said he and Maureen have been eating his mill-inspired cereal for breakfast every day since the late 1990s. The fit, slender Bull is a walking endorsement for the product. He added that readers interested in eating well should add whole-grain bread to their diet along with fruits such as raspberries, blackberries, and apples, all of which are high in soluble fiber.

“Don’t buy bran cereal that lists microcrystalline cellulose among its ingredients,” he concluded. “It’s basically high quality sawdust.”

“Don’t buy bran cereal that lists microcrystalline cellulose among its ingredients. It’s basically high quality sawdust.”

Brian Bull, MD



Services held for Marlowe Schaffner

Schaffner served as Loma Linda University executive, missionary to Africa

By James Ponder

Marlowe Schaffner, MD, former vice president of medical affairs at Loma Linda University and medical missionary to Africa, passed away March 1, 2017, in Loma Linda, California. He was 95.

A spokesman for the San Bernardino County Coroner said he died of natural causes.

Described by former Loma Linda University Medical Center President John D. Ruffcorn as both “very personable, a very good and loyal friend” and “a very astute administrator who didn’t mince words when he put forth his position,” Schaffner served Kettering Medical Center in Kettering, Ohio, as president from 1969 to 1979 before moving to Loma Linda University Medical Center later that year. He served as vice president at Loma Linda until his retirement in 1983.

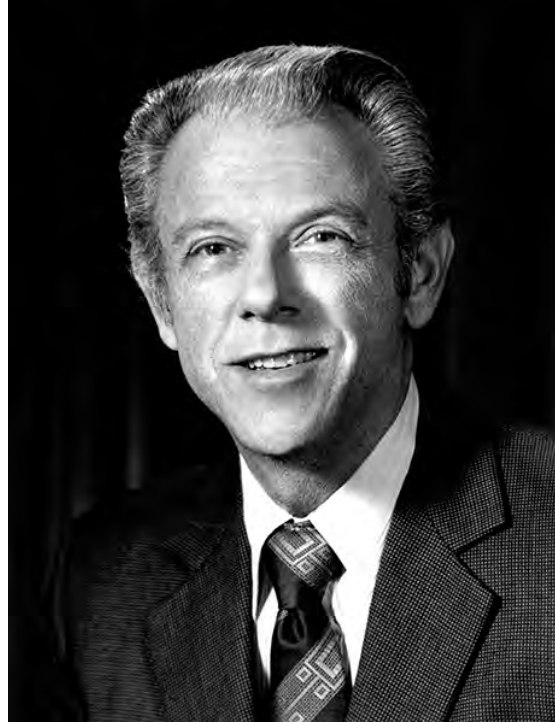
Following his post as vice president, Schaffner worked as an emergency room physician at Loma Linda University Medical Center and later at Menifee Valley Medical Center and Hemet Valley Medical Center, a position he still held at the time of his death.

Born Feb. 10, 1922, in Salem, Oregon, Schaffner attended the College of Medical Evangelists, the precursor to today’s Loma Linda University School of Medicine, graduating as a member of the class of 1946. While in medical school, he concurrently served for two years as a member of the United States Army.

Following an internship at White Memorial Hospital in Los Angeles, he finished his military service with another two year-stint as a physician assigned to the Veteran’s hospital in Walla Walla, Washington. He then entered private practice in Cottage Grove, Oregon.

In 1953, Schaffner and his family moved to Africa at the request of the Seventh-day Adventist Church to serve as medical director of Songa Mission Hospital in Zaire for seven years. However, national upheaval forced the Schaffners to flee the area in July 1960.

Schaffner worked for several months at Malamulo Hospital in Malawi while waiting for the tumult in Zaire, then known as the Belgian Congo, to subside. The following year, he flew back to Songa — leaving his family behind as the



conflict was still raging — in an attempt to re-establish medical work there. But when the fighting showed no signs of abating, he finally rejoined his family in December of that year in the southern city of Elisabethville, known today as Lubumbashi.

In a May 17, 2007, article in Loma Linda City News, writer Don Roth reported that the Schaffners were present during several rebellions. “Everyday life at times was perilous,” he wrote. “Twice his family escaped rebels who were on the loose. Another time, he and other missionaries met in a building that stood between rebels and United Nations troops.” The Congo Crisis ended when Colonel Joseph Mobutu of the Congolese National Army orchestrated a coup and took control of the government in November 1965.

Schaffner was eventually appointed medical secretary for the Trans-Africa Division of the church, an entity located in Zimbabwe that was later renamed. During the 16 years he and his family served in Africa, Schaffner performed an average of 700 operations per year ranging from routine procedures such as setting broken bones and correcting hernias to complex eye surgeries. Roth reported that Schaffner later contrasted that with “specialty surgeons in the United States who do an average of 300-400

procedures a year.”

Schaffner was no less busy during retirement. Roth reported that after he worked for 35 years as an emergency physician, the American College of Emergency Room Physicians recognized Schaffner as “the longest continuously practicing, board-certified Emergency Department physician in the entire United States.”

In his personal life, Schaffner enjoyed traveling to Europe and Asia and serving in leadership roles for a number of organizations, including the Seventh-day Adventist Hospital Association, the Alumni Association of the School of Medicine of Loma Linda University, the Canyon Lake Fine Arts Guild, and the Canyon Lake Property Owners Association.

He is survived by wife Mavis, children Ronald Schaffner, Richard Schaffner, Gregory Davis, Rita Corbett, Roberta Schaffner, and Kimberly Davis, 15 grandchildren and 16 great-grandchildren.

A memorial service took place April 1, at the Loma Linda University Church.

Loma Linda University honored by the Inland Empire Economic Partnership

The Inland Empire Economic Partnership (IEEP) announced that Loma Linda University has been selected as one of its 2017 Honorees.

Selected as Education Partner of the Year, “Loma Linda University has demonstrated exemplary leadership in bettering the business climate and quality of life of the Inland Empire,” said Paul Granillo, CEO and president of IEEP.

Ronald Carter, PhD, Loma Linda University provost, said, “Loma Linda is committed to this community and its citizens. As an organization, we strive to provide opportunities for individuals to prosper personally, spiritually and economically.”

At the Loma Linda University Health 2016 Research Affairs Symposium held on campus in October, John Husing, PhD, and chief economist for the Inland Empire, reported that Loma Linda University Health pumps more than \$1.336 billion into the Inland Empire economy each year. Husing predicted that the organization’s financial impact will grow far beyond that in coming years as recent graduates of the college find high-paying health care jobs and begin spending their money in local communities.

Loma Linda University Health’s newest campus, which opened in 2016, will serve as a clinical and educational facility in the heart of the San Bernardino inner city. The Loma Linda

University-San Bernardino campus, in addition to providing certificate-level training programs in a variety of health professions, houses the SAC Health System, which provides health care for 200,000 people each year.

“By using their talents, expertise

and influence, honorees such as Loma Linda University stand out among those who make the area a better place to live for the 4.4 million people of the region,” Granillo said.

The Inland Empire Economic Partnership is the region’s voice for business

and quality of life. Its membership, a collection of important organizations in the private and public sector, gives the organization the knowledge and perspective needed to advocate and provide a vibrant business and living environment.



Loma Linda University Health has been honored by the Inland Empire Economic Partnership for its efforts to better the business climate and quality of life for area residents.

9-year-old philanthropist donates birthday money to LLU Children's Hospital

By Briana Pastorino

Ulysses Hsu, 9 got a well-deserved high-five from LLUCH mascot Luke the Lion Monday March 6 after he donated his birthday money to the hospital to support Vision 2020.

Instead of unwrapping gifts at his birthday party, Ulysses Hsu, 9, of Eastvale, was taking donations for Loma Linda University Children's Hospital (LLUCH).

At his ninth birthday party, Hsu told his friends that he wanted to help support Vision 2020: The Campaign for a Whole Tomorrow, and by doing so he raised over \$1,600.

He stopped by LLUCH March 6 and presented a check for \$1,636 to hospital mascot Luke the Lion in the lobby. Patients and staff also came down to meet Hsu, who was accompanied by his parents.

"Loma Linda University Children's Hospital is not an ordinary hospital," Hsu said. "It is a place of happiness, love, comfort and warmth."

This is not the first time Hsu has delivered a check the hospital. The junior philanthropist first donated money from his eighth birthday in 2016 in honor of a friend who had cancer.

Jill Payne, assistant vice president of philanthropy at Loma Linda University Health emphasized that Hsu's benevolence has sparked a trend in the Give Now Build Hope campaign.

"You inspired a lot of people this year," Payne said to Hsu, adding that several other kids have donated their birthday money to Vision 2020. "You've started a movement."

Give Now Build Hope is the public giving



campaign that encourages anyone to give at any level toward the new Children's Hospital tower.

"Every little bit helps," said Joe Perry, assistant vice president of finance at LLUCH. "This is an amazing accomplishment and you make such a big difference in building hope for our patients."

Ulysses Hsu was able to share more than \$1,600 that family and friends donated in honor of his ninth birthday. Ulysses wanted to support Vision 2020 rather than receiving birthday presents. "Loma Linda University Children's Hospital is not an ordinary hospital," said Ulysses.

Three teams of researchers receive GRASP Awards

By James Ponder

The office of research affairs at Loma Linda University Health recently announced that three teams of two researchers each have been named winners of the 2016 GRASP Awards. The acronym stands for Grants for Research and School Partnerships.

According to Anthony Zuccarelli, PhD, vice president for research affairs, the three were chosen from a field of 14 applications involving 26 coprincipal investigators from seven Loma Linda University (LLU) schools.

Zuccarelli observed that each application was reviewed and scored by a panel of 15 or more senior researchers.

"Based on the combined scores of the reviewers," he noted, "three projects with investigators from five different schools were selected for awards, fulfilling the GRASP objective to encourage collaborative research between researchers in various parts of the institution."

The \$75,000, 24-month awards went to the following teams:

- Lisa Roberts, DrPH, associate professor at LLU School of Nursing, and Susanne Montgomery, PhD, associate dean and professor at LLU School of Behavioral Health
- Kristopher Boyle, PhD, assistant professor at LLU School of Pharmacy, and Eileen Brantley, PhD, assistant professor at LLU School of Medicine
- Ellen D'Errico, PhD, associate professor at LLU School of Nursing, and Gayathri Nagaraj, MBBS, assistant professor at LLU School of Medicine.

Roberts and Montgomery's study—titled "Understanding health and emotional responses and perceptions of Asian-Indian needs"—will focus on a mindfulness-based stress-reduction intervention designed to help Asian-Indian immigrant women living in the United States cope with challenging social-adjustment situations that predispose them to elevated levels of anxiety and depression.

Boyle and Brantley's study—titled "AhR agonist analogs as novel agents to treat refractory breast cancer"—seeks to test a potential treatment for the deadly disease which, according to the Centers for Disease Control, currently kills approximately 40,000 women per year in the United States alone.

D'Errico and Nagaraj's study—titled "Intraneural facilitation: managing chemotherapy-indirect peripheral neuropathy"—will evaluate the effectiveness of a novel, non-invasive, physical therapy treatment for a painful, annoying, and sometimes very serious side effect of chemotherapy in breast cancer patients.

Zuccarelli points out that the GRASP Awards were instituted on campus in 2010 to address an imbalance.

"Research expertise is not evenly distributed throughout the schools of Loma Linda University," he observed. "Most of the extramural grant awards go to faculty in one school. However, there are faculty members in all eight of our

schools with research capability."

As evidence, Zuccarelli points to calendar year 2015. In that year, the LLU School of Medicine enjoyed gross expenditures of extramural funding of \$19.7 million, while all the other schools of Loma Linda University saw less than \$3 million each. Some saw significantly less than that.

He is very optimistic about the effectiveness of the GRASP program.

"The GRASP Award program is already having an impact," Zuccarelli reports. "Not only does it give researchers from around the campus of Loma Linda University an opportunity to get their studies funded, but it also allows less-experienced investigators to team up with veteran researchers who know their way around the laboratory as well as the requirements of national funding agencies."

This past year, the program paid off in a significant new way.

"For the first time since the GRASP program began," Zuccarelli concludes, "we received an equivalent amount of extramural funding for research that originated as GRASP projects. We have now balanced all monies paid out to date with funds coming in from outside research funding sources. We look forward to the day when GRASP-funded projects will lead to significant new innovations in patient care."



Michael Samardzija, PhD, JD, associate vice president of research development (left) with GRASP Award winners Brantley, Boyle, D'Errico, Nagaraj, Montgomery and Roberts.

SM Alumni Association names 2017 honorees

The Alumni Association, School of Medicine of Loma Linda University, announced its 2017 Alumnus of the Year and six honored alumni during the school's 85th Annual Postgraduate Convention gala at the Riverside Convention Center, which coincided with One Homecoming weekend.

Alumnus of the Year Anton N. Hasso '67

Born in Iraq, Anton Hasso graduated from La Sierra College in 1963. Following medical school, he interned at Los Angeles County Hospital before completing a residency in radiology at the White Memorial Medical Center and a fellowship in diagnostic and cardiovascular radiology at Loma Linda. He was also a special fellow in neuroradiology at the National Institute of Neurological Diseases and Stroke at UCLA and a postdoctoral fellow in orbital and ENT radiology at the Foundation A. De Rothschild in Paris.



Returning to Los Angeles, Dr. Hasso taught radiology, otolaryngology, and head and neck surgery at Loma Linda for more than 20 years. In 1996, he joined the faculty of the University of California, Irvine, as professor and chair of the department of radiological sciences. He continues to serve as director of the neuroradiology fellowship program, professor of otolaryngology and head and neck surgery, and director of neuroimaging research and development. He is also a voluntary clinical professor of radiology at Loma Linda.

Dr. Hasso's research teams have won more than \$3 million in research grants and awards. He has held more than ten visiting professorships around the country and served on more than a dozen editorial boards. He has authored or coauthored more than 150 refereed articles and contributed to dozens of books, chapters, and abstracts. He has been a guest lecturer at numerous conferences and events around the world.

In addition to his academic work, Hasso has held a number of professional leadership roles, including president of the American Society of Neuroradiology, the California Radiological Society, the Western Neuroradiological Society, the American Society of Head and Neck Radiology and the American Roentgen Ray Society. Furthermore, he has been a member, director, and officer of many other societies, committees, and boards. He has long supported his alma mater and the Alumni Association. His late wife, Peggy Fritzsche, '66, was also a well-known Loma Linda radiologist and strong supporter of our institutions.

Dr. Hasso currently serves as the Alumni Association president and continues to live and teach in Irvine. He has two sons and one grandchild.

Honored Alumni Albert Crum '57-aff

After two years of medical school at Loma Linda, Dr. Crum went on to graduate from Harvard Medical School in 1957. Following service in the U.S. Air Force he completed a psychiatric residency at Columbia University in 1963. He served as medical director of Psychiatric Services International and was a consultant to a number of well-known figures around the world.

In 1987, he completed a master's degree in neuroscience from New York University, continuing on as clinical professor of management sciences and behavioral sciences there for 25 years. In 2000, he published a book about his precept method of stress relief, "The 10-Step Method of Stress Relief." That same year Dr. Crum founded The Prolimmune Company, which produces immune-enhanced dietary supplements based on a 2003 patent of his. Dr. Crum and his wife Rosa live in New York.

Charles Knapp '62

With his eyes set on becoming a missionary surgeon after medical school, Dr. Knapp was instead drafted by the U.S. Army in 1963. As a battalion surgeon he directed medical civic action projects in Central and South America. Circumstances dictated that he remain in the Army, a direction that led to an eclectic and nontraditional career in medicine.

During his distinguished military career of nearly 30 years, Dr. Knapp held key roles including command and senior staff. After a residency in aerospace

medicine, he served as a NASA support physician for Apollo 11. He was involved in bioengineering research and development in aviation safety. In the 1980s his responsibilities included medical support and diplomatic medical logistics negotiations in the Middle East. He served in Operation Desert Storm and received numerous military awards and badges. Since retiring from the military, Dr. Knapp has founded five successful businesses. He and his wife Mary live in North Carolina.

James Couperus '67

Following an internal medicine residency and a fellowship in infectious diseases at Loma Linda, Dr. Couperus served two years as chief of medicine and laboratory officer at the Naval Hospital in Oak Harbor, Washington. He practiced medicine in Tennessee, California, and Oregon before joining the faculty of infectious diseases at Loma Linda in 1979. He has dedicated his career to the school ever since.

Dr. Couperus has held numerous faculty and administrative positions including associate professor of medicine, medical director of hospital epidemiology, head of infectious diseases, and chair of the Infection Control Committee. He has served on many boards and committees including the admissions committee, the executive committee, and the bylaws committee. He was twice recognized by his senior internal medicine residents for his outstanding contributions to the program. He and his wife Cheryl reside in Redlands.

Helgi Heidar '67

Raised in Iceland, Dr. Heidar taught in the Seventh-day Adventist school system there and took his training in business and school administration in the U.S. before pursuing medicine at Loma Linda. After spending three years in the U.S. Public Health Service, Dr. Heidar returned to Loma Linda for an ophthalmology residency. Three years of private practice led to an interest in the intra ocular lens and further training in Holland in 1976.

In 1985, Dr. Heidar cofounded the Pacific Cataract and Laser Institute, the first ophthalmic outpatient eye surgery center in Washington. The institute now comprises 17 centers in six states. In 1995, Dr. Heidar took a mini fellowship at Gimbel Eye Centre in Canada. He helped modernize the eye department at Montemorelos University and twice taught phacoemulsification cataract surgery in China. In 1998, he founded Laser Vision Specialists in Olympia, where he performed refractive surgery. He and his wife Drusilla are now retired in Chehalis, Washington.

Gerald Kirk '67

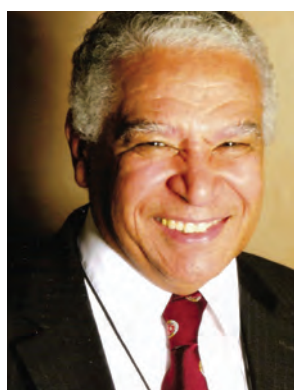
Following his internship, Dr. Kirk was a missionary physician in Ethiopia. Military service took him to Alaska, where from 1970 to 1972 he served in the Indian Health Service. Returning to Loma Linda, he took a radiology residency and began a "study tapes" ministry. Over time it became known as Pine Knoll Publications and at its peak was distributing more than 1,000 pieces of material a month to missionaries posted around the world.

In 1975, Dr. Kirk joined the faculty of nuclear radiology at Loma Linda. Three years later he became director of the department, a position he maintains today. He has served as chair of the Radiation Safety Committee and been involved with a number of other committees and associations in his field. His research activities, presentations, and published papers number in the dozens. A cancer survivor himself, Dr. Kirk and his wife Cherie live in Redlands.

William Smith '67

As an instructor for the U.S. Army, Dr. Smith developed the first computer-assisted teaching program in the Army Medical Department. He took an anesthesiology residency at the Los Angeles County Harbor General Hospital and Los Angeles Children's Hospital. Moving to Tennessee, he became head of the School of Anesthesia at Madison Hospital. The school eventually became the Middle Tennessee School of Anesthesia and is the only freestanding fully-accredited graduate institution for nurse anesthetist training in the U.S. At his retirement in 2006, Dr. Smith had trained nearly 1,000 CRNAs—more than any physician in American history.

In 1981, Dr. Smith founded Holiday Seminars, Inc., which has since provided continuing education credits for 15,000 anesthesia practitioners at locations around the globe. He retired from clinical practice six years ago and served as president of Holiday Seminars until 2014. He and his wife Bonnie live in Madison, Tennessee.



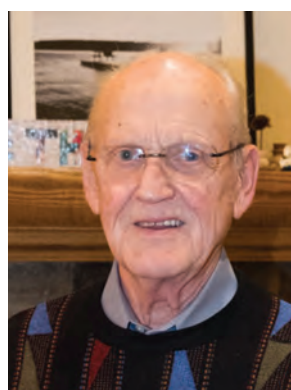
Albert Crum '57-aff



Charles Knapp '62



James Couperus '67



Helgi Heidar '67



Gerald Kirk '67



William Smith '67

Institute for Health Policy and Leadership appoints new director

Wonha Kim seeks to promote community wellness through public health policy and education efforts.

By Larry Becker

Wonha Kim, MD, MPH, has been appointed director of Loma Linda University Health's Institute for Health Policy and Leadership. She began her service in January 2017, after serving for two years as the Institute's senior research scholar and then for a year as the Institute's associate director. She succeeds Gerald Winslow, PhD, who was the Institute's founding director in 2012.

In her new role, Kim plans to continue the Institute's mission of providing education, leadership and research regarding policies aimed at preventing disease, promoting wellness and restoring human wholeness. At the same time, she sees the Institute's work as being focused on research and education rather than advocacy.

Currently the Institute has three major strategic initiatives—oral health, hunger as a health issue, and integrating mental and behavioral health into overall health policy.

"We are able to bring together scholars from across the campus to contribute to our work in these areas," Kim said. "The Institute has a Faculty Scholars Program, which brings full-time faculty from different Schools on campus to engage in dialogue and collaboration." Currently 11 Loma Linda University Health faculty members serve as Scholars in this program.

"Our mission is to serve the whole LLUH entity," Kim said. "This allows us to tap into the various talents that are here. We also have a great team here at the Institute."

One of the Institute's early initiatives was a program to educate health care providers about the Affordable Care Act and the Covered California health insurance exchange program. An outgrowth of that early education effort has been the establishment of regular "Spotlight on Health Policy" programs held at least three times per year on the Loma Linda campus.

"It's important that our campus population is aware of these significant health policy issues," Kim said. "Our programs have included information about California's End of Life Option Act, recent ballot initiative that legalized marijuana, and integration of mental health into primary care among other topics."

The Institute regularly produces publications, policy briefs, and other documents on significant health issues which are available on the resources page of the Institute website. They also publish a blog to raise awareness about relevant health policy topics and conduct conferences with community leaders. Much of the Institute's output can be found on their website.

Along with her role as Institute director, Kim is Assistant Professor of



Pediatrics and of Preventive Medicine in the Loma Linda University School of Medicine and Assistant Professor for the School of Public Health. She earned her medical degree from Johns Hopkins University and obtained her masters in public health at the Johns Hopkins Bloomberg School of Public Health. Her undergraduate degree is from Princeton University's Woodrow Wilson School of Public and International Affairs.

As she was completing her post-graduate work at Hopkins, Kim was anticipating serving the Seventh-day Adventist Church internationally. Those plans changed—at least for the time being.

"A woman promoting support for international orphanages visited my local church in Baltimore," Kim recalled. "After that visit, the woman connected me with Dr. Hart because of my interest in medical missions." While very much aware of Loma Linda University, Kim had not considered moving to California as an option.

"But you know how Dr. Hart is," Kim said. "Very persuasive." Hart had the heads of the pediatric, preventive medicine, and public health areas contact her. Then she received a phone call from the head of the Institute for Health Policy and Leadership. After talking to Winslow and praying about it, Kim said, "I felt God wanted me to do this."

Clearly, Kim's days are full as she teaches, sees patients and provides leadership to the Institute. But her dream of serving internationally is still something she sees in her future.

"God has a special plan," she said. "I've realized that while I'm here at Loma Linda, I am creating a network and meeting people who have a similar vision. What I'm doing for Loma Linda is part of my path to becoming a medical missionary."

Wonha Kim, new director for the Institute for Health Policy and Leadership, plans to continue the education, leadership and research activities there.



TODAY

Volume 30, No. 2 | March/April 2017

Executive editor	Garrett Caldwell gcaldwell@llu.edu
Editor	Ansel Oliver anoliver@llu.edu
Design	Larry Becker lrbecker@llu.edu

CORRESPONDENTS

Marcus Chapman mjchapman@llu.edu	Briana Pastorino bpastorino@llu.edu
Doug Hackleman, MA dhackleman@llu.edu	Heather Reifsnnyder, MA hreifsnnyder@llu.edu
Chris Clouzet cclouzet@llu.edu	Tony Yang, MBA thyang@llu.edu
James Ponder jlponder@llu.edu	Nancy Yuen, MPW nyuen@llu.edu

Have a newsworthy story? Visit news.llu.edu/news, click on the "Submit a story idea" bar, and complete the form to submit your story idea.

TODAY is a nonprofit publication of Loma Linda University Health, operated under the auspices of the General Conference of Seventh-day Adventists.

Internal campus-based advertising accepted for publication is intended to be a service to the staff, students, and faculty of all Loma Linda University Health entities. No outside advertising is included in this publication. The management, at its sole discretion, reserves the right to refuse, without explanation, any advertisement. The acceptance of advertising in this publication does not represent an endorsement or guarantee of any kind by Loma Linda University Health or any of its entities.

Questions about content, campus-related advertising, and circulation should be directed to TODAY, Office of Public Relations, Welcome Center, 11157 Anderson Street, Loma Linda, California 92354. Phone (909) 558-4111. © 2016 All rights reserved.

news.llu.edu | facebook.com/lluhealth