



Available wireless network connections: their differences, and how to connect on a PC.

There are two ways in which one can connect to the wireless network: **Encrypted** and **Unencrypted**. The **Encrypted** network will show as **LLU-WPA** and will require the WPA key **makemanwhole** (key is case sensitive). It will allow you full access to all resources available over the wireless connection based on your role. The **Unencrypted** network will show as **LomaLindaUniversity** for both BG and A access points. It will allow you access to most resources, but not things such as SSH, Citrix, and Remote Desktop on internal LAN.

Below is an example of the wireless networks you will see, and how to connect to them, using the default wireless configuration on OS 10.5 (Other versions of Mac OS may differ). If you are using another wireless configuration application, please refer to its documentation for further assistance.

If available, select the network you want to connect to (**LLU-WPA** or **LomaLindaUniversity**) from the AirPort List.



When connecting to the **Encrypted** network, you will be prompted to enter the WPA key, **makemanwhole** (key is case sensitive). (The LLU-WPA SSID uses TKIP encryption)



You may also receive a message from your keychain, select "Always Allow"

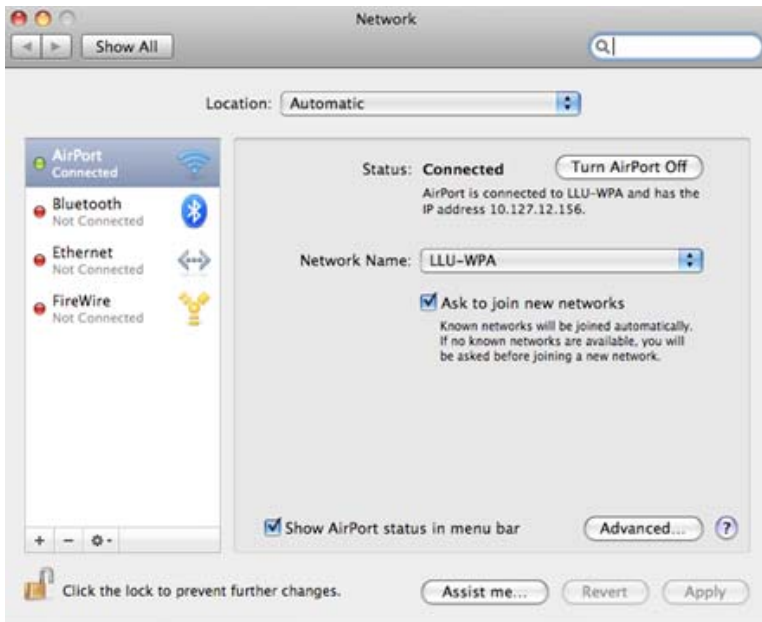


When connecting to the **Unencrypted** network, please note this method transmits information in clear text. If you are using this network, it is your responsibility to insure that sensitive information is being secured by the providing application using SSL or some other form of security.

If you do not have the networks listed you will need to add them as preferred networks. To add a preferred network, start by selecting “Open Network Preferences” in the AirPort menu.



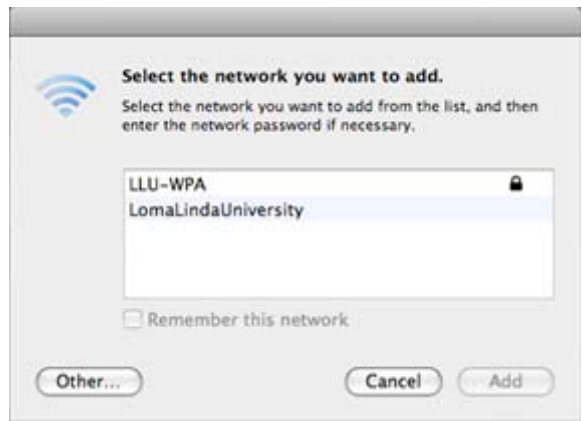
Then Select “Advanced”



On the new window, ensure that you are on the “AirPort” tab, and then select the “+” to add a network.



Next you will select “Show Networks”, and will get a list of networks as shown below.



To add the **Encrypted LLU-WPA**, select the network from the list, click “Remember this network”, type in the Password: **makemanwhole** (key is case sensitive), and press “Add”. (The LLU-WPA SSID uses TKIP encryption)



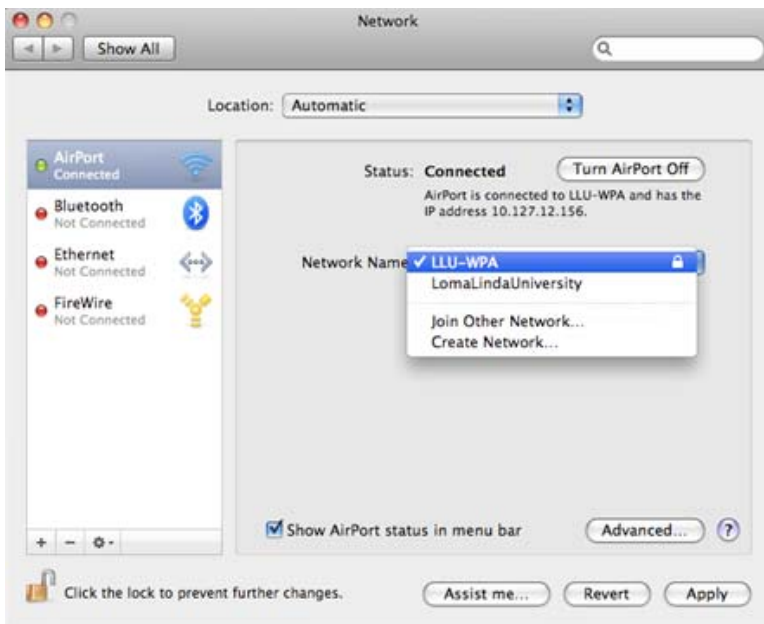
To add the **Unencrypted LomaLindaUniversity**, select the network from the list, click “Remember this network”, and press “Add”.



On the previous window, you should see that your network is now listed. Press “OK”



Select the network you want to connect to, Press “Apply” and then close the window.



After connecting to either network, **LLU-WPA** or **LomaLindaUniversity**, you will need to login with your LLU username and password to have access to the internet. This username and password is the same login information that is used to access LLU Online or myLLU.

